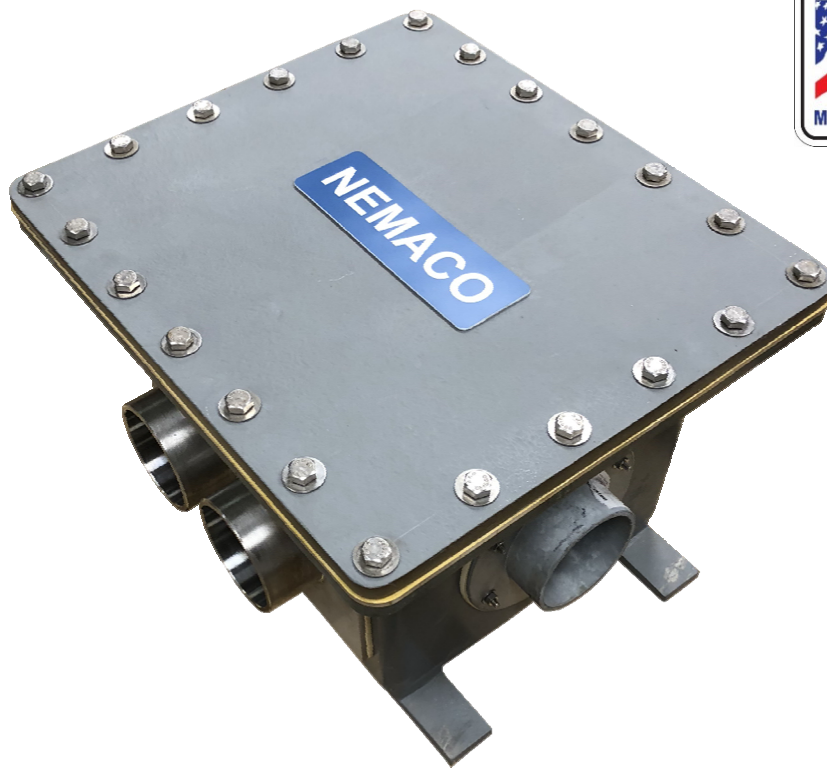


NEMACOTM

EXCELLENT ELECTRICAL ENCLOSURES

*SUBMERSIBLE ENCLOSURES (IP67 /
NEMA 6P FIBRE-REINFORCED PLASTIC (FRP)*



WATERPROOF JUNCTION AND PULL BOX
STANDARD 15 FT. 24 HOURS PERFORMANCE TEST
CONDUIT AND FLEXIBLE CALBE SEALED
UV PROTECTION GEL COATING

(281) 251-4233

WWW.NEMACO.COM

SALES@NEMACO.COM

INDUSTRY AND APPLICATION

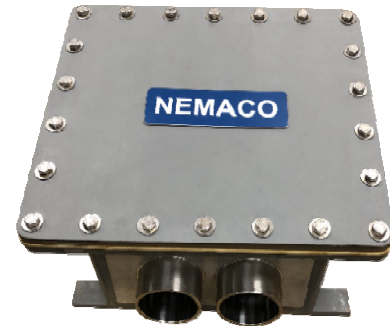
NEMA 6P (IP67/IP68) Fibre-Reinforced Plastic (FRP) provide excellent protection in submersible environments against corrosion and the entry of water during occasionally continued submersion. These submersible enclosures are widely used in Traction Power, Signaling and Rail Control, Tunnels and Bridges, Manholes and Basements, and Telecommunication equipment applications.

SUBMERSIBLE ENCLASURE

Nemaco offers excellent performance class submersible and custom-built 6P (IP68) enclosures that are manufactured per customer's specifications, dimensions, seals and materials. All enclosures are performance tested according to customers' submersion requirements. Nemaco standard test is at 15 FT. 24 hrs. using ISO17025 standard instrumentation and equipment.

MATERIAL AND AVAILABLE OPTIONS

- Standard enclosures are manufactured with layers of fiberglass sheets and special resin composites.
- UV protection gel coating is applied entire enclosure, standard color are white and gray.
- Performance seal is available in Silicone, EPDM, VITON, BUNA-N
- Custom Fittings (NPT, FPT, FF), Cable Glands, and Roxtec Seals are available on request.



Enclosure	Interior Dimensions	Exterior Dimensions	Interior Panel (Option)			Exterior Mounting Tabs		Estimated Weight	Figure
Part Number	A x B x C	A1 x B1 x C1	A2 x B2	C2	IPT	A3 x B3	TAB	LBS.	No.
N6P040404-FRP	4 x 4 x 4	7 x 7 x 4.5	N/A	N/A	N/A	6 x 4	0.38	12	1
N6P060604-FRP	6 x 6 x 4	9 x 9 x 4.5	N/A	N/A	N/A	8 x 6	0.38	15	1
N6P080806-FRP	8 x 8 x 6	11 x 11 x 6.5	6 x 6	0.5	1/4-20	10 x 8	0.38	19	1
N6P101008-FRP	10 x 10 x 8	13 x 13 x 8.5	8 x 8	0.5	1/4-20	12 x 10	0.38	22	1
N6P121208-FRP	12 x 12 x 8	15 x 15 x 8.5	10 x 10	0.5	1/4-20	14 x 12	0.38	29	1
N6P161608-FRP	16 x 16 x 8	19 x 19 x 8.5	14 x 14	0.5	3/8-16	18 x 16	0.50	45	1
N6P242412-FRP	24 x 24 x 12	28 x 28 x 12.5	22 x 22	0.5	3/8-16	27 x 24	0.50	67	1
N6P303012-FRP	30 x 30 x 12	35 x 34 x 12.5	28 x 28	0.5	3/8-16	33 x 30	0.50	79	1
N6P362412-FRP	36 x 24 x 12	41 x 29 x 12.5	34 x 22	0.5	3/8-16	39 x 24	0.50	76	1
N6P363012-FRP	36 x 30 x 12	41 x 35 x 12.5	34 x 28	0.5	3/8-16	39 x 30	0.50	87	1

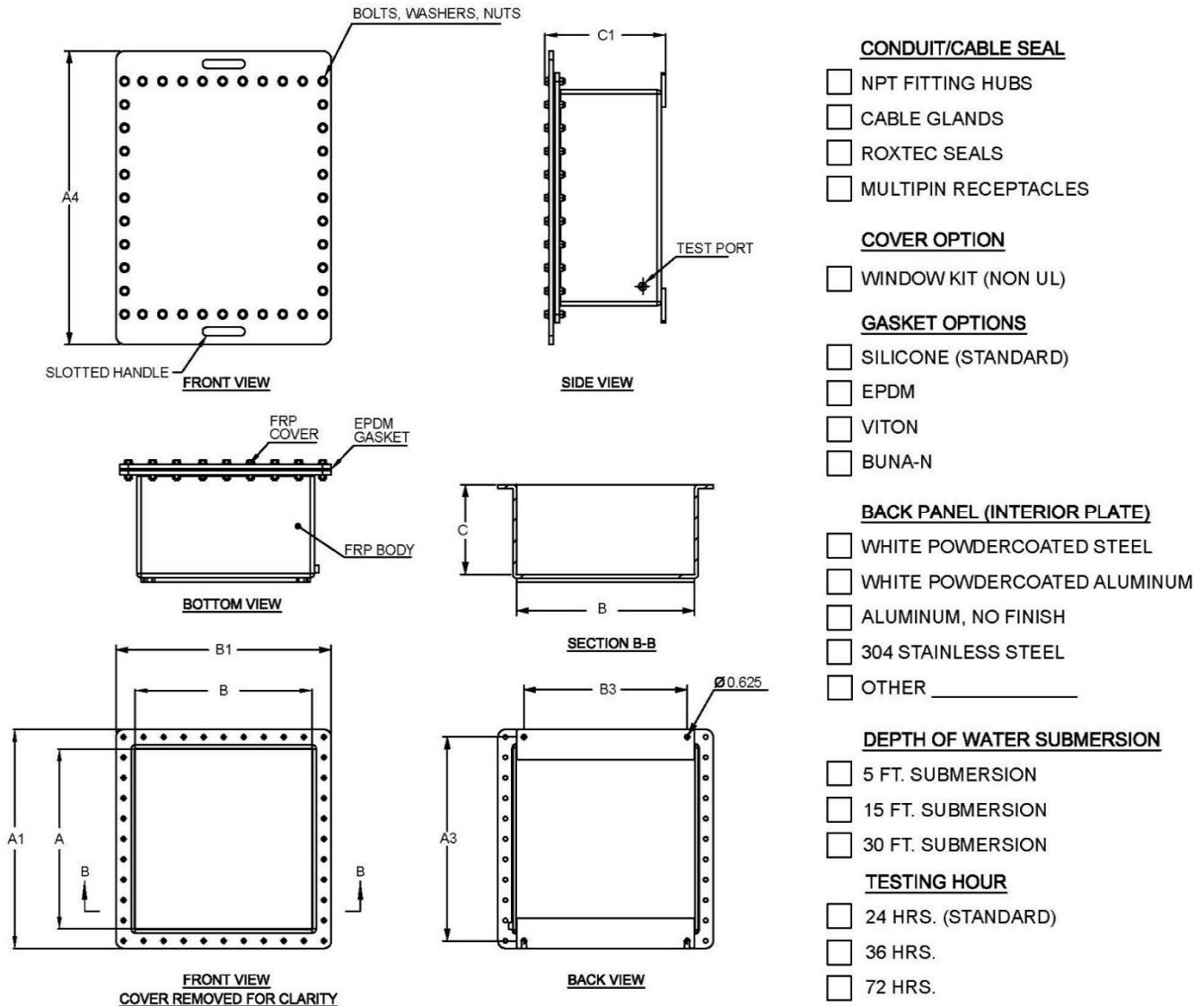
* Limited Available sizes

(281) 251-4233

WWW.NEMACO.COM

SALES@NEMACO.COM

UL LISTED SUBMERSIBLE ENCLOSURES NEMA 6P FIBRE-REINFORCED PLASTIC (FRP) ENCLOSURE DESIGN



FIGURE# 1